

Parking Logix - Parking Sensor Integration

Enable Parking Logix Integration

Before you can use the Parking Logix integration on your system you will need to navigate to your **Third Party** settings under **System Settings**.

From there you should see the option to enable **Parking Logix Integration**.

The screenshot displays the 'Manage System Settings' interface. On the left, a 'Components' sidebar lists various settings categories with counts: General System Settings (15), Alarms (11), Automatic Login (1), Collections (6), Deposits (2), Forms (2), Global (7), Incidents (2), and Lightweight Directory Access Protocol (9). The main content area is titled 'Manage System Settings' and shows 'Editing Settings: Third Party' with a count of 23. A callout box points to the 'Parking Logix Integration' toggle, stating: 'Enables the Parking Logix fields in the Lot Groups editor'. The toggle is currently checked. Below it is an unchecked checkbox for 'Validate Student Accounts through Connect'. Further down, the 'Mailgun Settings' section includes fields for 'Mailgun Domain' and 'Mailgun Private API Key'. The 'Twilio Integration' section includes a field for 'Twilio Account Number' with the value 'AC9a9c6acb7fd25827ffd9ad3f82fbcd50'.

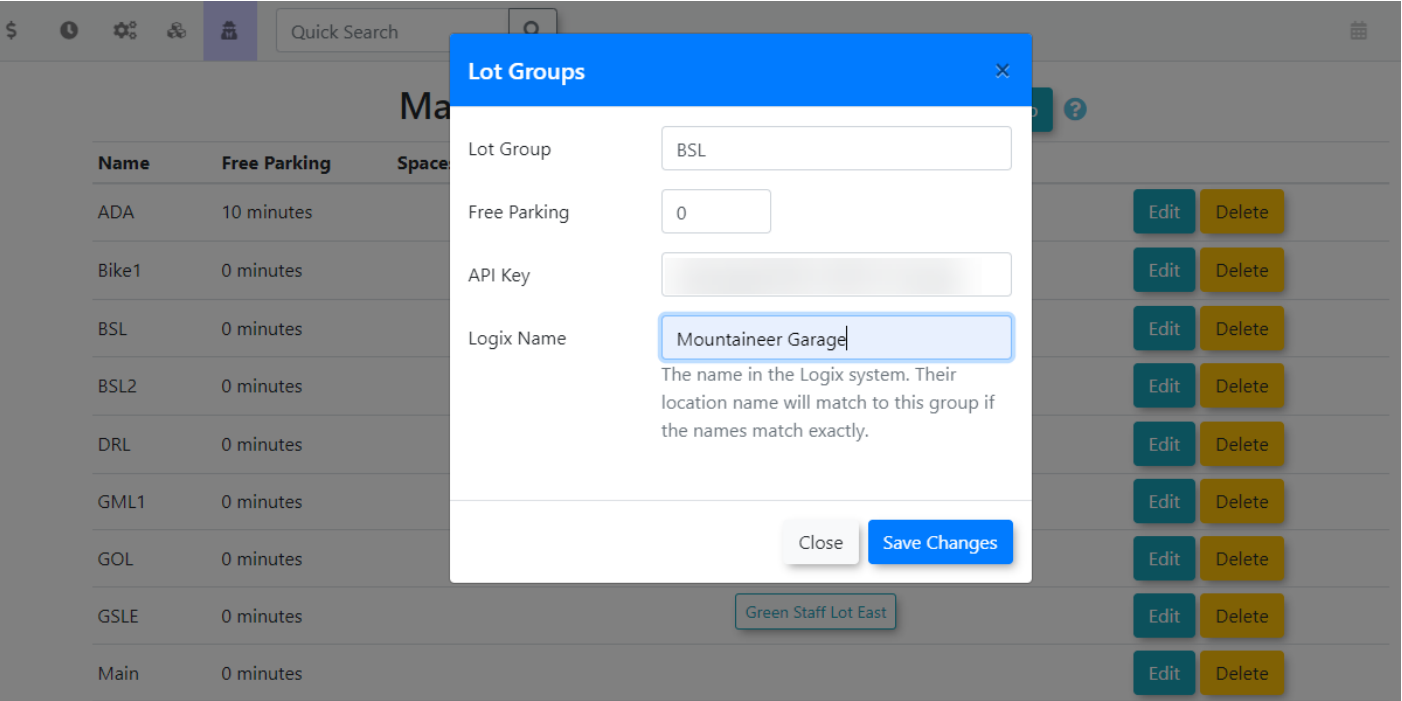
Adding the Lot Group

Next, add a new lot group to your system making sure you include the API code. It is possible but unlikely that there will be multiple API keys if lot access is split over several keys.

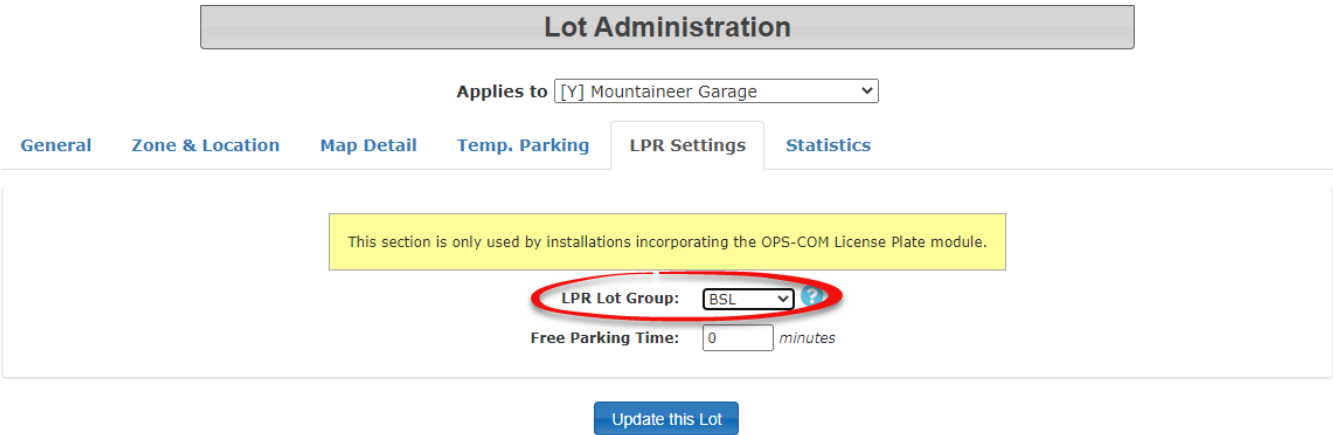
Create a specific group for each lot you will be collecting data from.

It's important to note that you will also need to enter the Parking Logix specific name for the lot and it must match exactly.

For example, in the image below, the Parking Logix name is *Mountaineer Garage*.



Once the Lot Group has been configured you would need to assign it to the lot on the **LPR Settings Tab** of the Lot Administration tool.

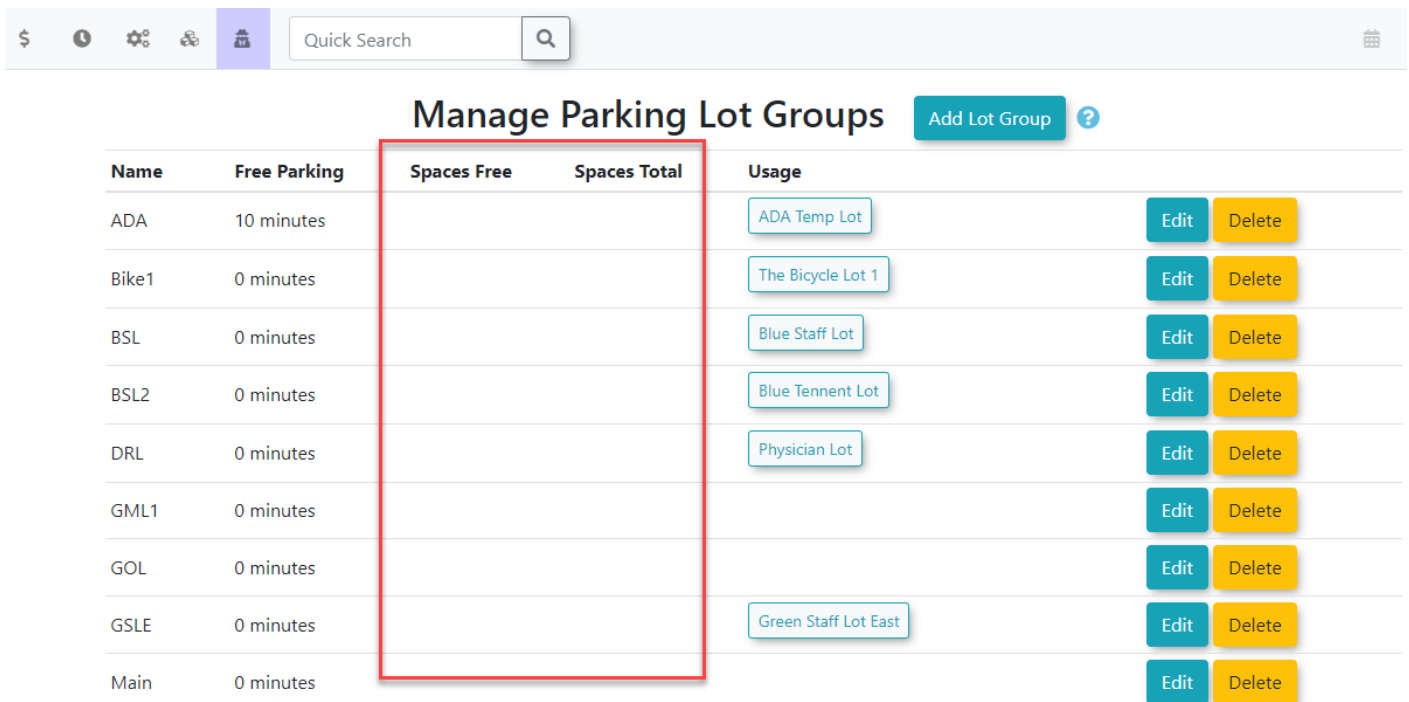


Enable the System Task

A system task must be enabled for the Parking Logix sensors to communicate with our system.

This must be enabled by OPS-COM integration staff and you can contact us through support to set this up. Please email support@ops-com.com for assistance.

Once the system task has been run you should see updated on the lot counts under **Manage Parking Lot Groups**



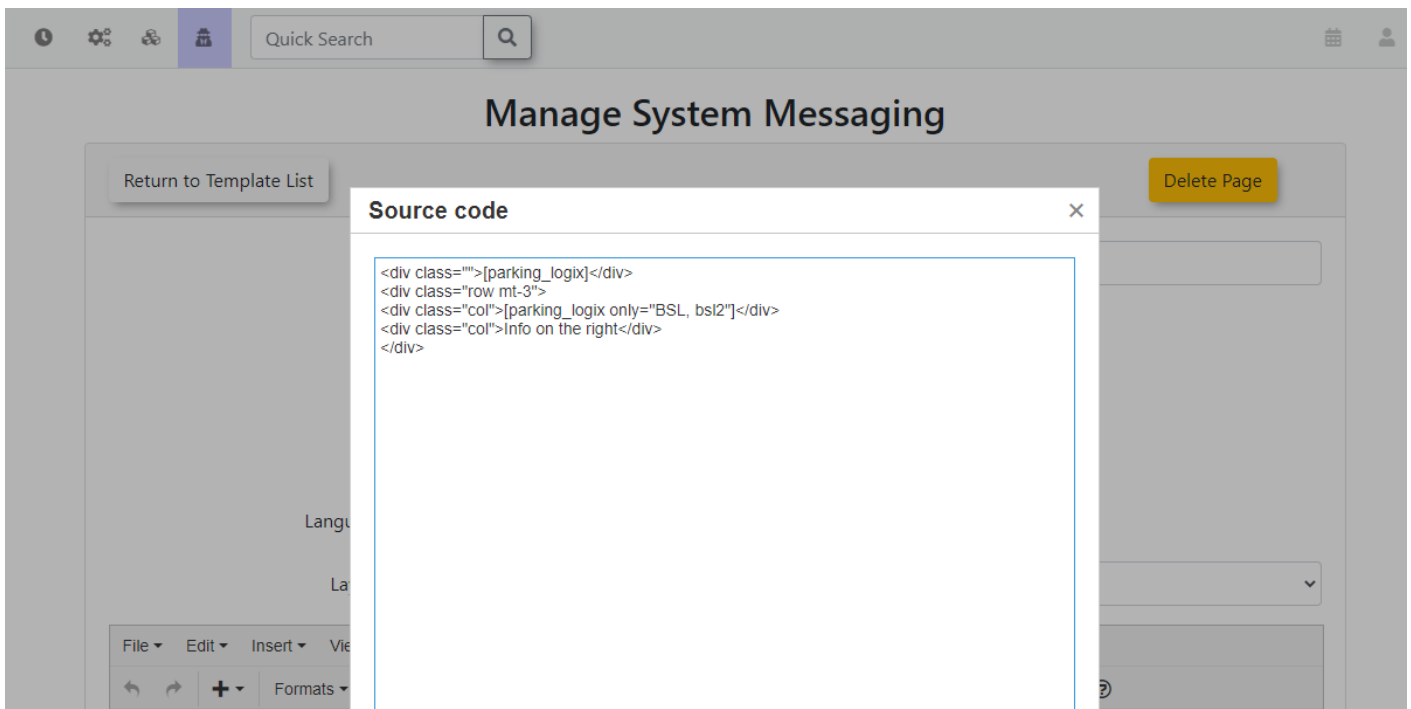
Manage Parking Lot Groups					
Name	Free Parking	Spaces Free	Spaces Total	Usage	
ADA	10 minutes			ADA Temp Lot	Edit Delete
Bike1	0 minutes			The Bicycle Lot 1	Edit Delete
BSL	0 minutes			Blue Staff Lot	Edit Delete
BSL2	0 minutes			Blue Tennent Lot	Edit Delete
DRL	0 minutes			Physician Lot	Edit Delete
GML1	0 minutes				Edit Delete
GOL	0 minutes				Edit Delete
GSLE	0 minutes			Green Staff Lot East	Edit Delete
Main	0 minutes				Edit Delete

Displaying the Map on the User Side

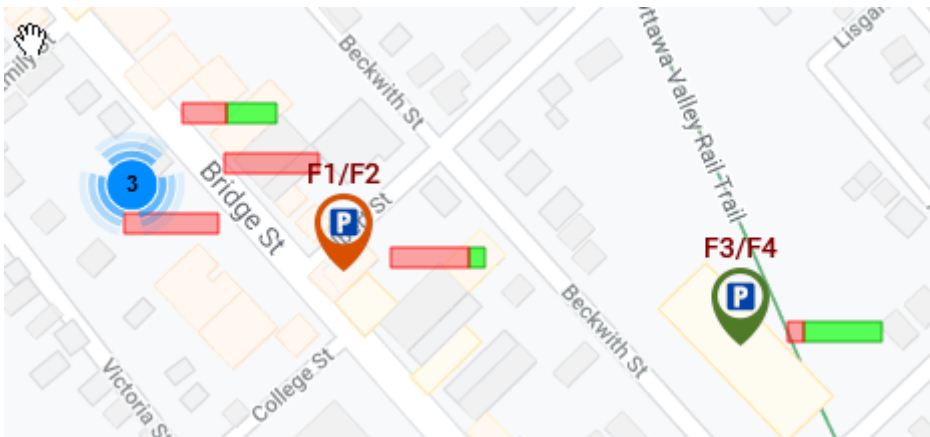
Finally, enter the short code on the user side to any of your pages using **System Messaging**.

For more information on how system messaging works please see: <https://wiki.ops-com.com/x/M4QCAw> followed by **Editing Pages**.

The short code is **[parking_logix]** and you can pass addition parameters such as: *only*, *show*, *filter*, or *name*. This will restrict the list to show only specific lots.



By design, it will only show lots that have a group assigned to it that have an API key stored in it.



Revision #2

Created 27 May 2024 11:24:41

Updated 11 September 2024 13:40:49