

OperationsCommander - <https://opscom.wiki>

## Updating Tattile Camera Firmware

### Justification for Firmware Updates

There are two purposes behind updating the firmware of the LPR camera. One would be to simply update the existing firmware. The other is changing the firmware based on your specific region. There is specific firmware tailored to the region in which you are using the camera. There would be firmware specific to the state of California and it's surrounding states that would be optimized for reading plates in those states as opposed to plates in Florida for example, Firmware updates allow you to update the entire system. This instruction applies to ANPR Mobile cameras.

### How to Update

Two updating methods are available:

1. **Upgrade firmware keeping current settings:** in this section, the update is carried out without changing the previously configured parameters.

Press the Browse button and select the update file from the PC file list. Once this file has been selected, press the Upload button and confirm the operation. When update completes, the User is asked to reboot the ANPR Mobile machine by pressing the Reset button displayed on screen.

2. **Upgrade firmware with default settings:** in this section, the upgrade is carried out by deleting all user-defined parameters and reloading the default settings of the new .BIN file just loaded using the Browse and Upload command sequence.

This procedure is the same as the one previously described.

## How do I find my current firmware version?

1. Go to the **System** tab of the camera configuration screens. Look for **Device Info**.



2. Click on **Device Info** to bring up the Device Info screen. The firmware version is the first line in the information list.



# ANPR MOBILE SYSTEM Advance

## Device Informations

Plate Reader

System

```
VERSION
Firmware version = ANPR Mobile Ver.2.22 Mar 16 2017 11:29:27
OCR lib version = Tattile Plate Reader Ver.3.128.000
Traffic Interface lib = 1.94
TOS version = 4.34.32
BOOTLOADER version = 3.0
KERNEL version = 3.0.35-tattile #43 SMP PREEMPT Mon Feb 9 08:38:48 CET 2015
DRIVER version = 2.0.24
FILESYSTEM version = 2.4
UPDATE version = 2.4c
FPGA Version = 1058

DEVICE STATUS
Image Sensor OCR = CCD_1280x1024_BW_VITA1300 (99) (50)
Image Sensor CTX = CCD_1280x1024_COL_VITA1300 (100)
Board Serial Number = 14213099
Board code = 696
Board revision = 2
MAC Address = 0x00C00889920E
Hostname = TT-mobile
GMT Time & Date = 19.05.33, 12/03/2019, GMT offset: -300min, DST status: OFF
LOCAL Time & Date = 15.05.33, 12/03/2019
Application time = 04:27:02
Device uptime = 05:11:36
Temperature = 42.0 °C
Humidity = 26.7 %
Pointing Angles = Tilt: 5.8° Roll: 6.0°
Current = 895mA
```

[www.tattile.com](http://www.tattile.com)

3. If it is established that the firmware is out of date, go back to the system tab and look for the **Firmware** menu item.



# ANPR MOBILE SYSTEM Advance

## System Configuration

Plate Reader

System



[Network](#)



[Time Sync](#)



[HTTP Users](#)



[Log Files](#)



[Firmware](#)



[Device Info](#)



[GPS](#)



[Sys Statistics](#)



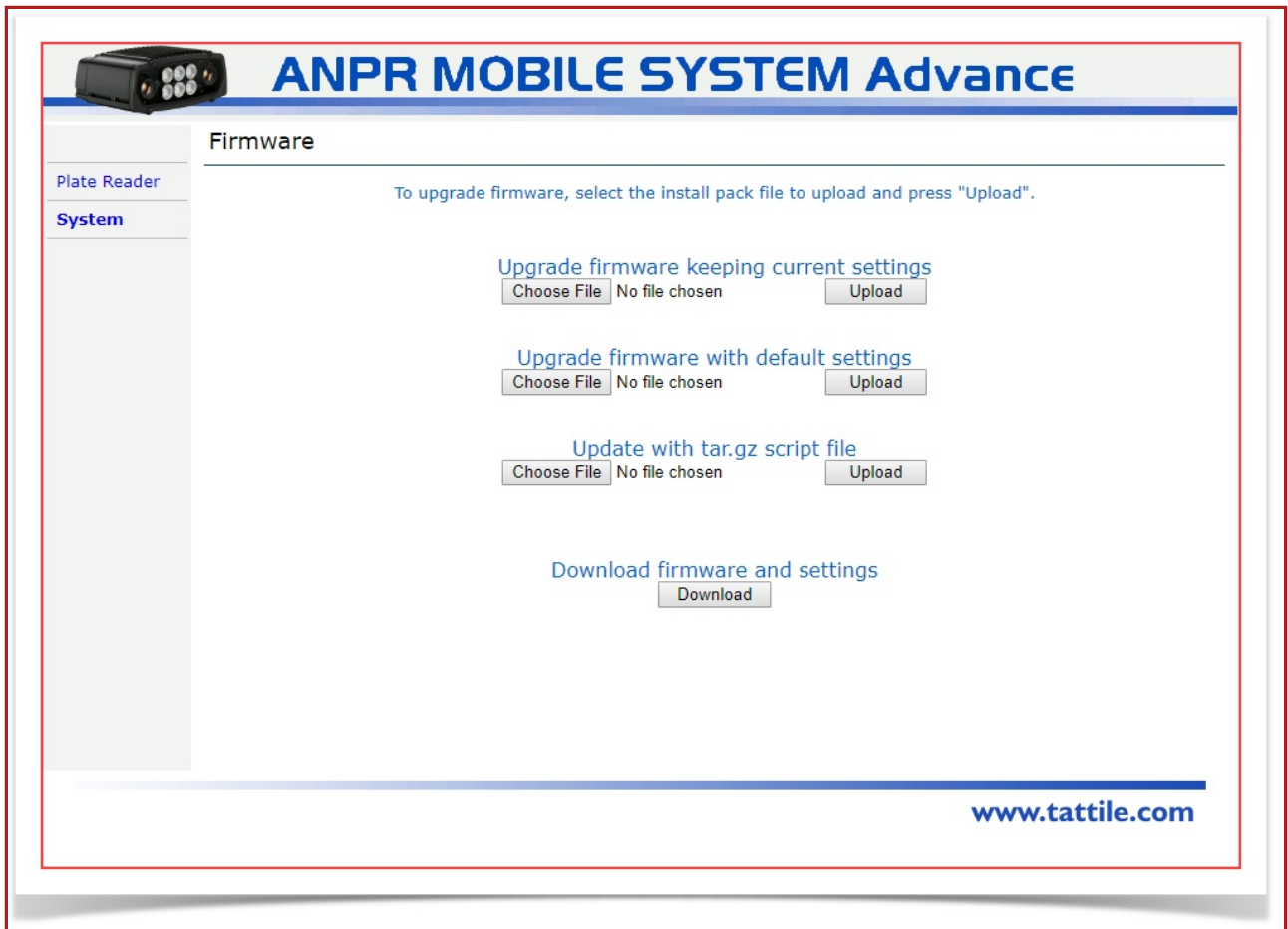
[Secure Digital](#)



[Diagnostic](#)

[www.tattile.com](http://www.tattile.com)

4. Click on **Firmware** to bring yo to the update page.



5. If you are in the process of upgrading the firmware there are two main factors to consider.

You are either starting with a new camera in which case you will upgrade with default settings or, if you have a previously configured camera you will be upgrading the firmware keeping current settings.



# ANPR MOBILE SYSTEM Advance

## Firmware

Plate Reader

System

To upgrade firmware, select the install pack file to upload and press "Upload".

[Upgrade firmware keeping current settings](#)

Choose File No file chosen Upload

No file chosen

[Upgrade firmware with default settings](#)

Choose File No file chosen Upload

[Update with tar.gz script file](#)

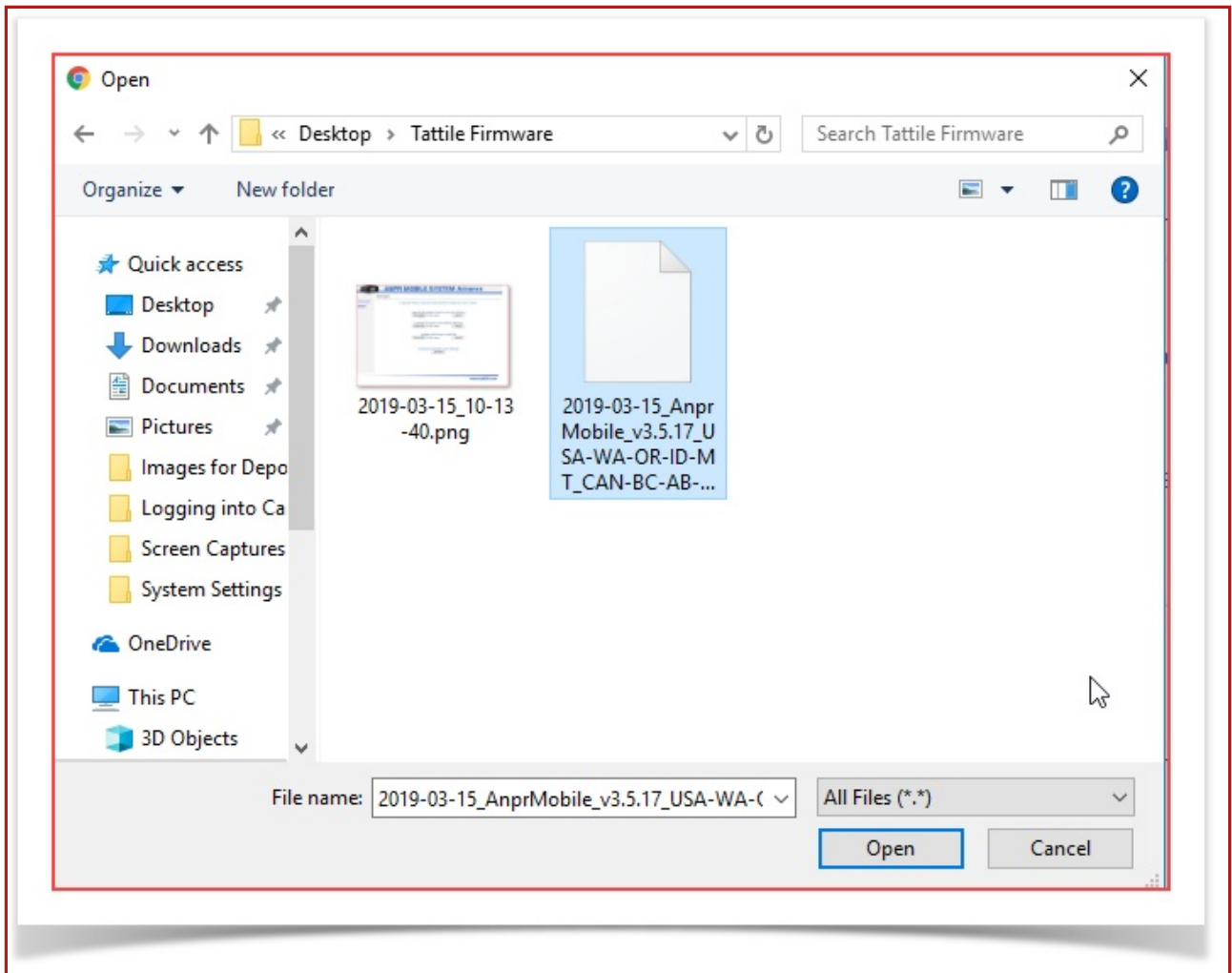
Choose File No file chosen Upload

[Download firmware and settings](#)

Download

[www.tattile.com](http://www.tattile.com)

6. Navigate to the location of the firmware update file to select it for upload. This will be a .gpg file.



7. The file will be staged for upload. Notice the file name appears in the upgrade interface.



# ANPR MOBILE SYSTEM Advance

## Firmware

Plate Reader

System

To upgrade firmware, select the install pack file to upload and press "Upload".

[Upgrade firmware keeping current settings](#)

Choose File | 2019-03-15...-QC-ON.gpg | Upload

[Upgrade firmware with default settings](#)

Choose File | No file chosen | Upload

[Update with tar.gz script file](#)

Choose File | No file chosen | Upload

[Download firmware and settings](#)

Download

[www.tattile.com](http://www.tattile.com)

8. Click on Upload to complete the upgrade process. This may take a little time.



# ANPR MOBILE SYSTEM Advance

Plate Reader

System

## Firmware

To upgrade firmware, select the install pack file to upload and press "Upload".

Upgrade firmware keeping current settings

Choose File 2019-03-15...-QC-ON.gpg Upload

Upgrade firmware with default settings

Choose File No file chosen Upload

Update with tar.gz script file

Choose File No file chosen Upload

Download firmware and settings

Download

[www.tattile.com](http://www.tattile.com)

Take Command of Your Parking and Security - <https://OperationsCommander.com>

Revision #2

Created 24 May 2024 11:34:49

Updated 21 May 2025 10:33:52