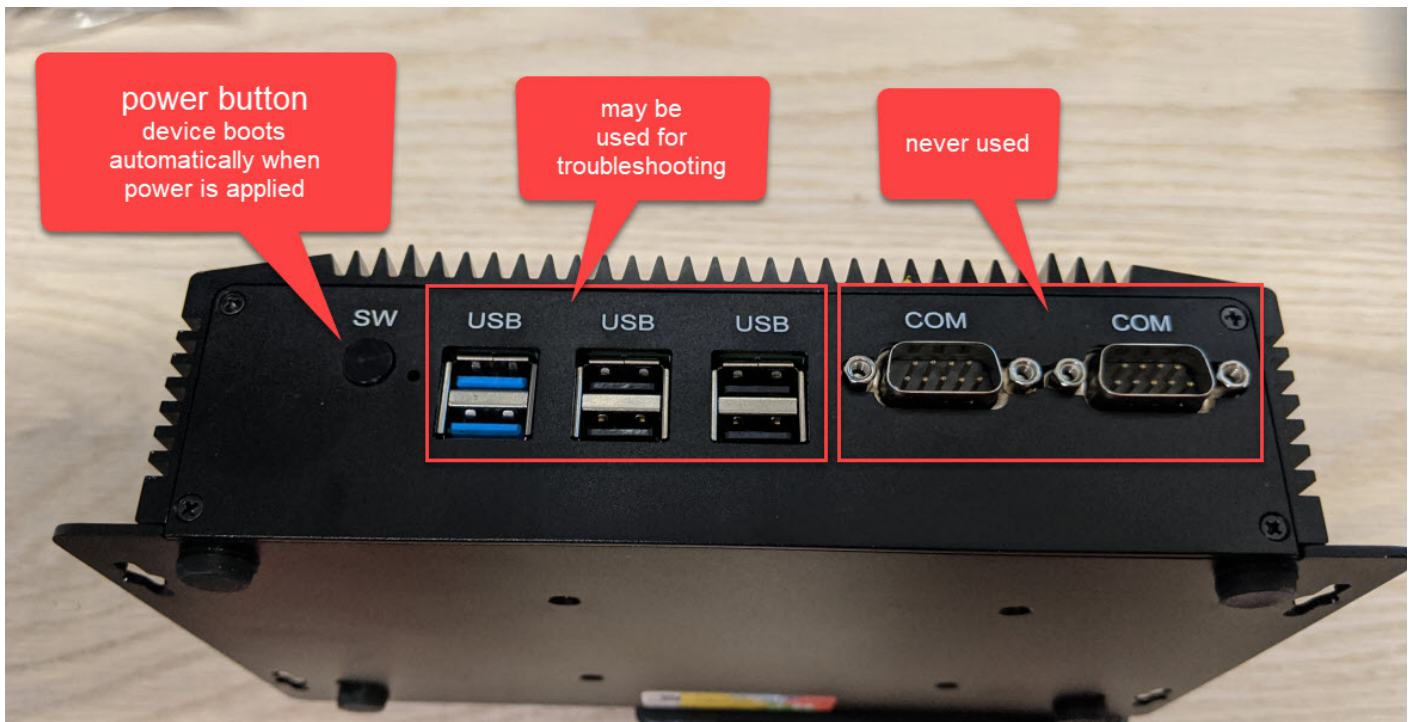


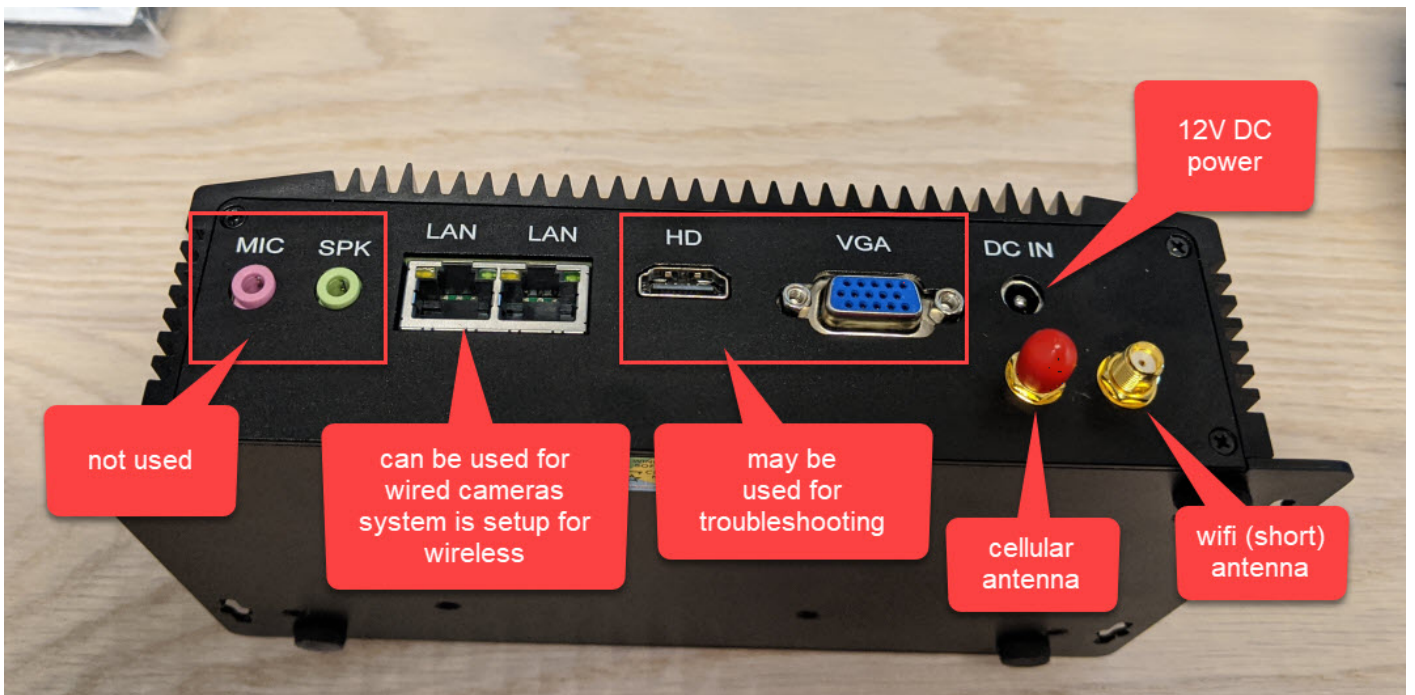
PL8RDR Hardware Connections

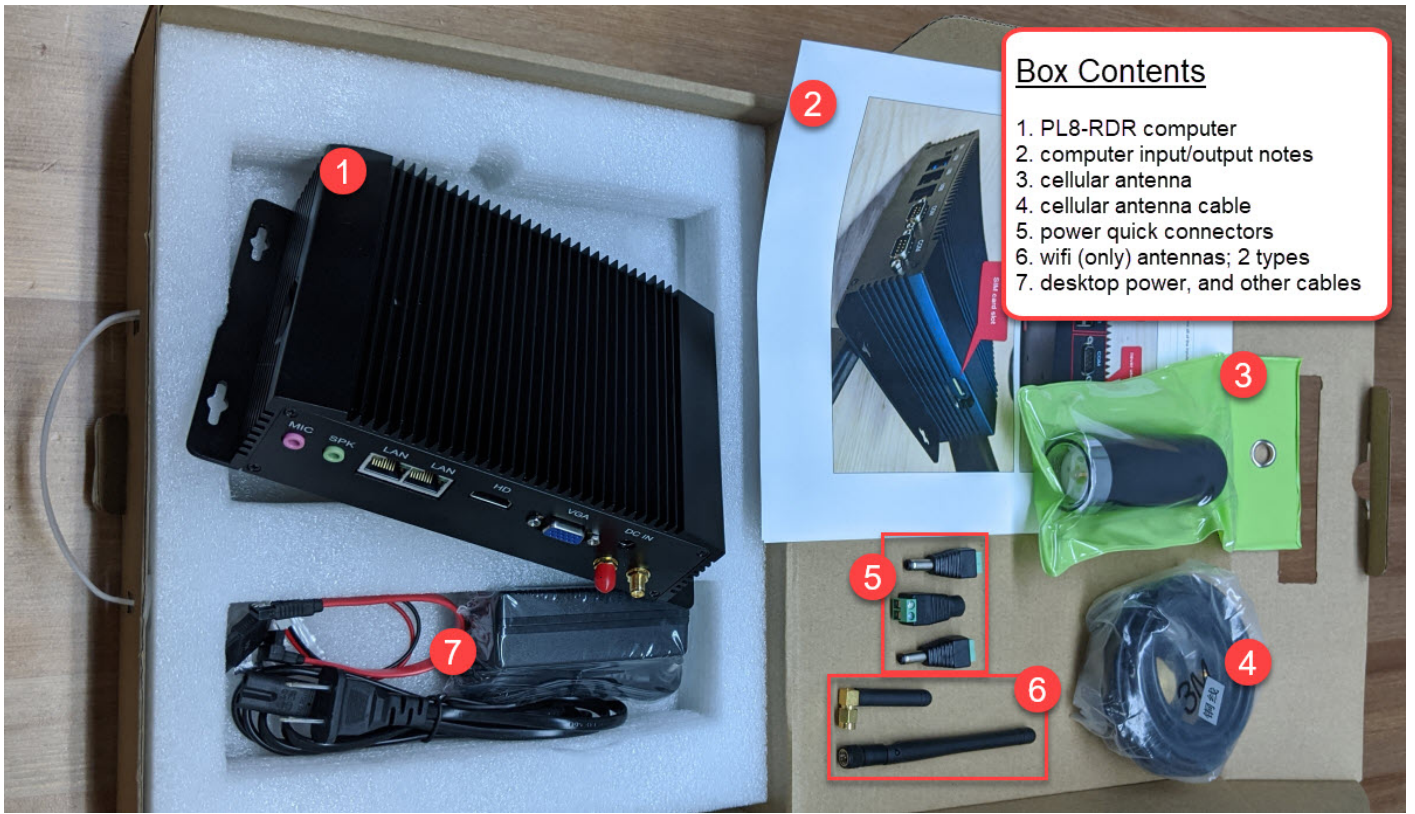




In the field, only the cellular antenna, wifi antenna, and power connectors are used.

Power is 12V DC and should be connected with an inline fuse.





Box Contents

1. PL8-RDR computer
2. computer input/output notes
3. cellular antenna
4. cellular antenna cable
5. power quick connectors
6. wifi (only) antennas; 2 types
7. desktop power, and other cables

Revision #2

Created 24 May 2024 14:12:28

Updated 21 May 2025 10:33:52