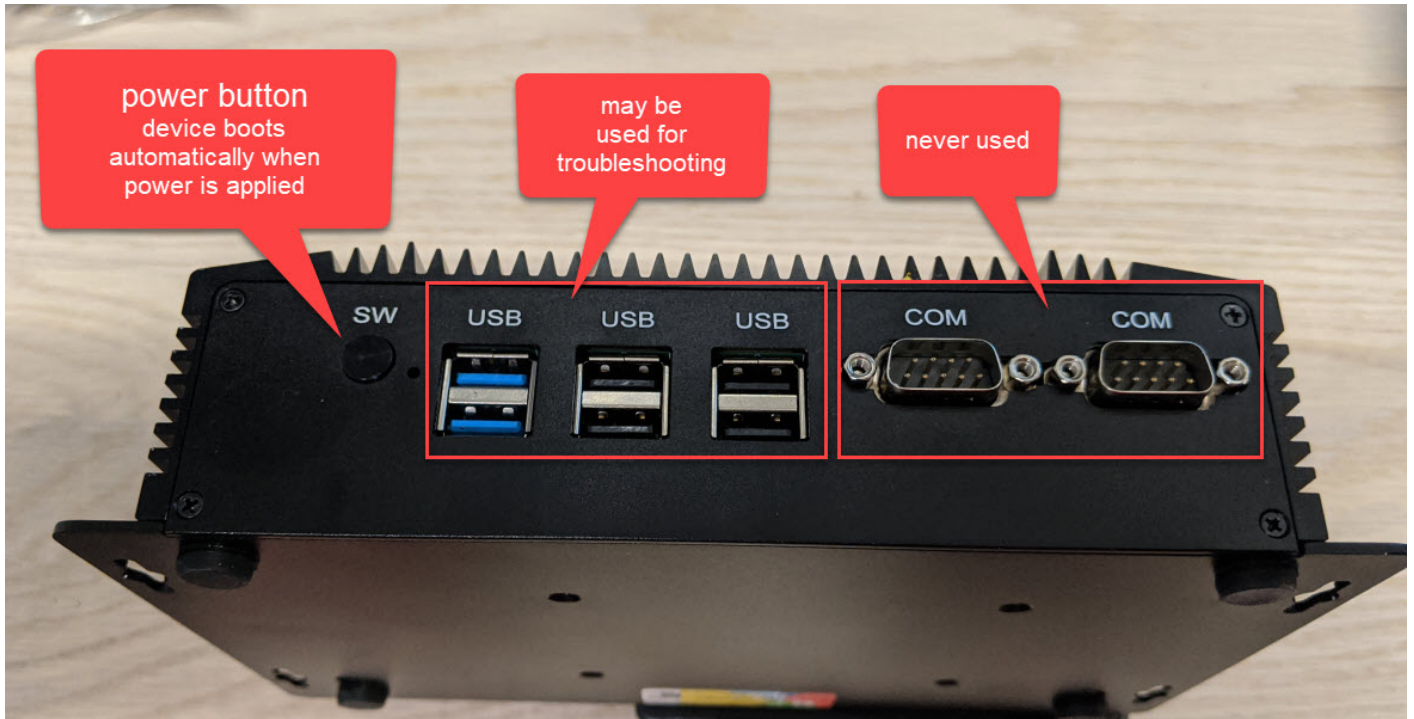


PL8RDR Mobile LPR

- [PL8RDR Hardware Connections](#)
- [PL8RDR Signal Strength](#)

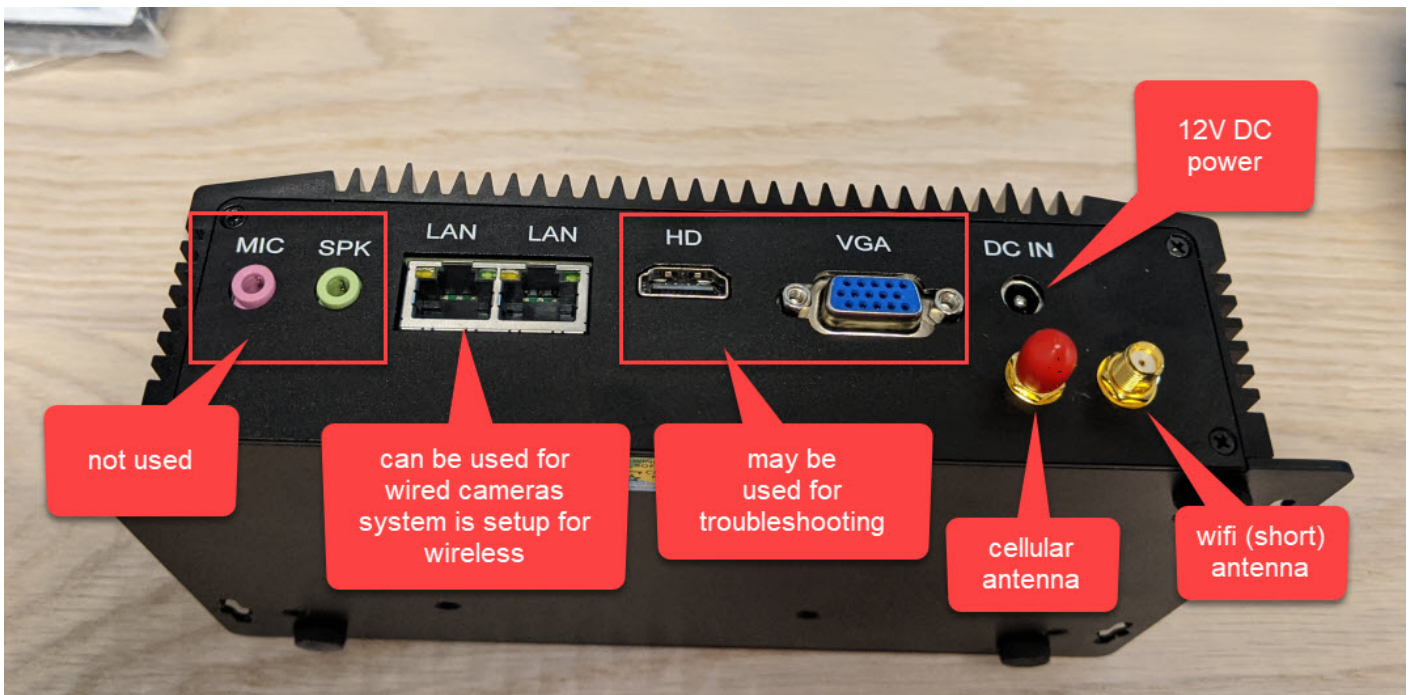
PL8RDR Hardware Connections

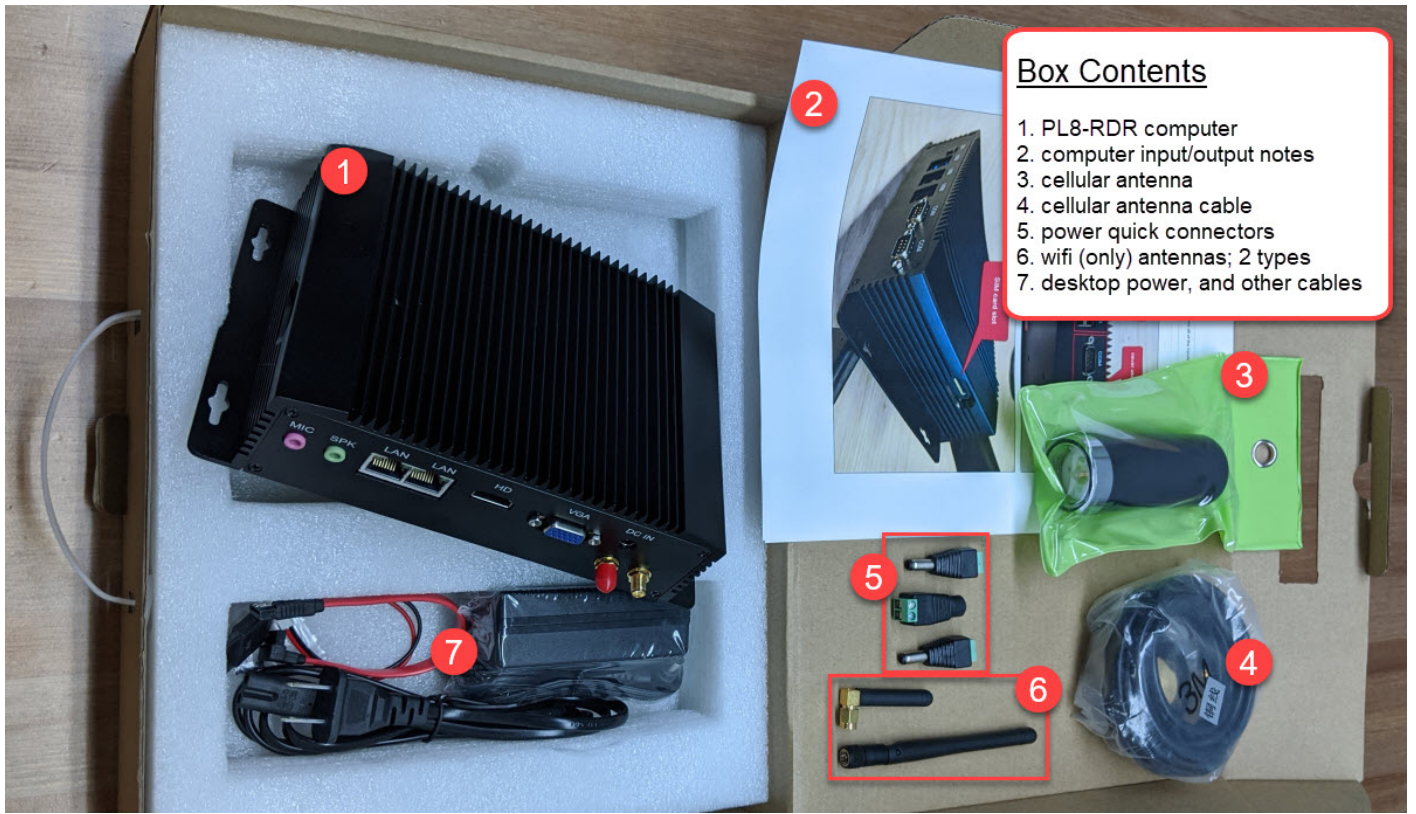




In the field, only the cellular antenna, wifi antenna, and power connectors are used.

Power is 12V DC and should be connected with an inline fuse.





Box Contents

1. PL8-RDR computer
2. computer input/output notes
3. cellular antenna
4. cellular antenna cable
5. power quick connectors
6. wifi (only) antennas; 2 types
7. desktop power, and other cables

PL8RDR Signal Strength

Signal Strength

There are two types of signal strength that can come into play. You may be using WIFI or you may be using LTE (cellular communication).

If you are a WIFI user you can test signal strength with multiple applications that are typical a free download.

If you are a LTE user you can see the signal strength by looking at the device's status from the LPR Scanning screen.

By tapping on Status at the top right of the screen you will be presented with a list of items and their connection status.

Signal Strength will appear at the bottom of this list.

The closer to zero the better.

dBm	Comment
-51	Best
-80	Minimum for best connectivity
-90	Noisy connection; not stable
-96	<i>our office window (usable)</i>
-107	<i>LTE tablet outside (usable)</i> <i>Phone in basement</i>
-111	Worst
failed	failure to get signal