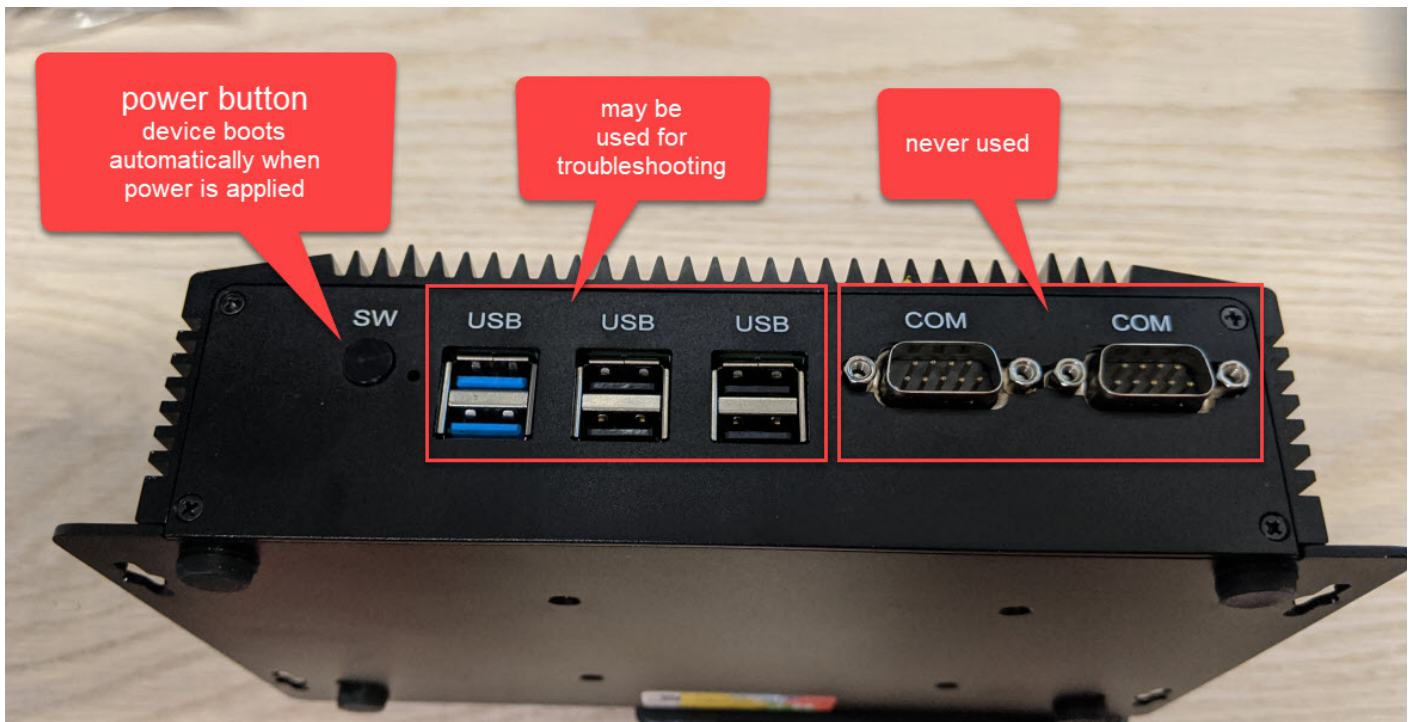


PL8RDR Hardware Connections

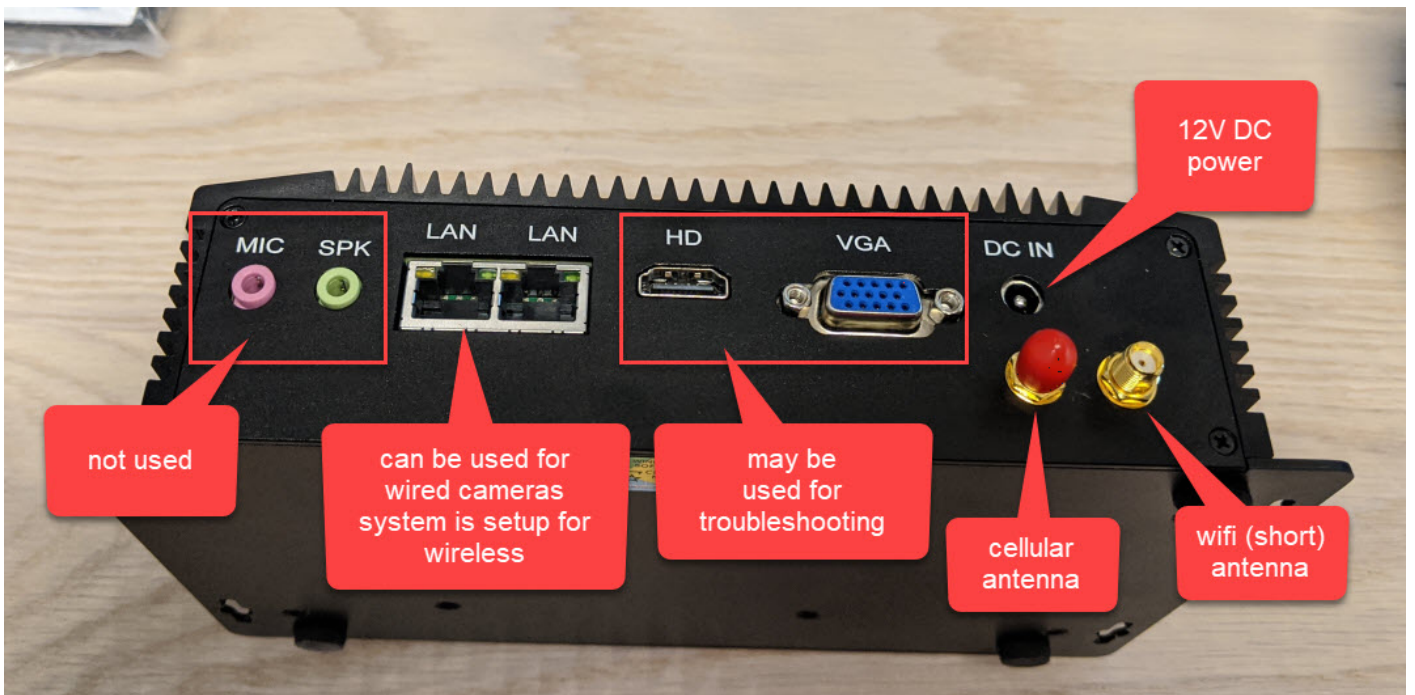




SIM card slot

In the field, only the cellular antenna, wifi antenna, and power connectors are used.

Power is 12V DC and should be connected with an inline fuse.



12V DC power

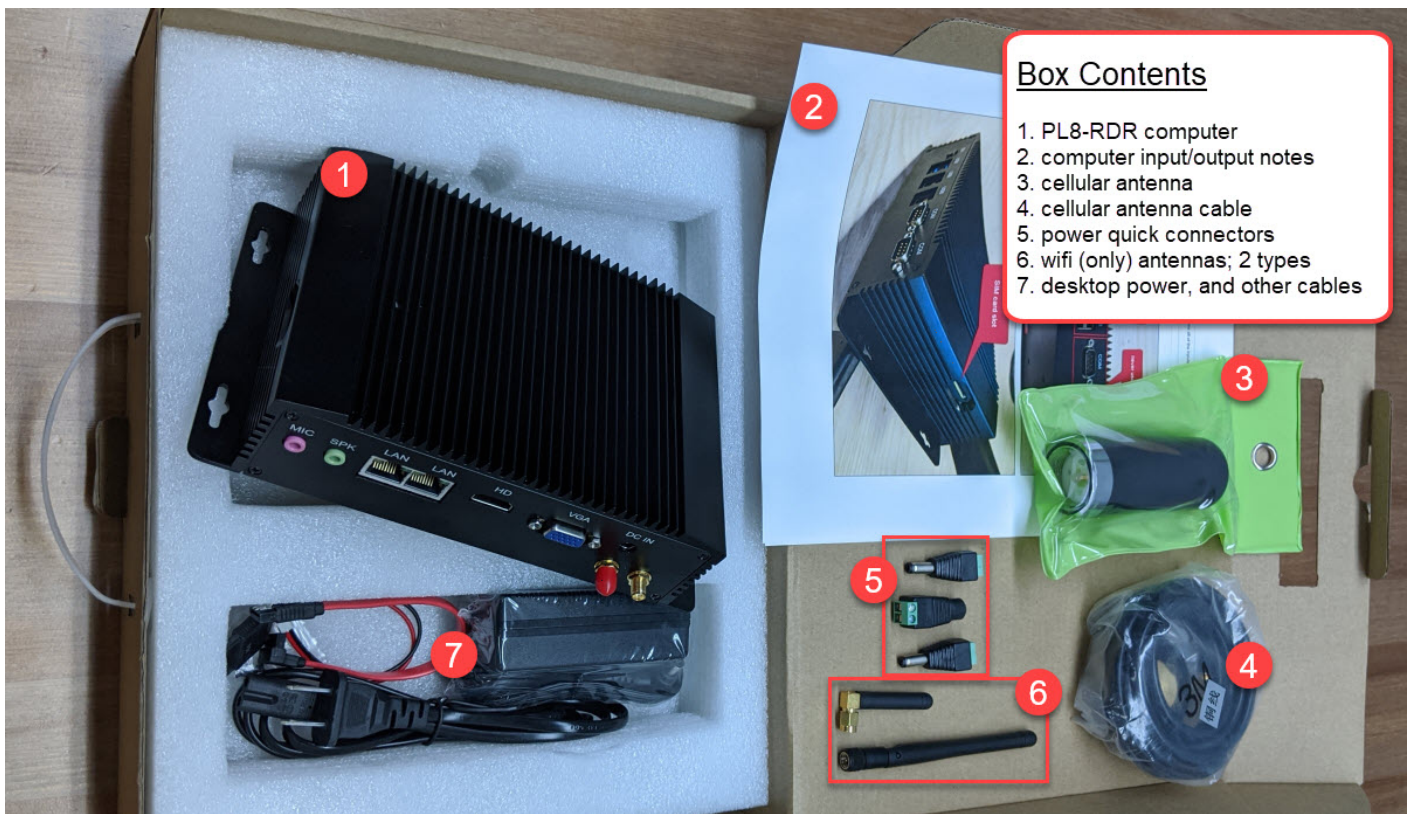
not used

can be used for wired cameras system is setup for wireless

may be used for troubleshooting

cellular antenna

wifi (short) antenna



Revision #2

Created 24 May 2024 14:12:28

Updated 11 September 2024 13:40:49