

Landing Page and Dashboards

When you sign in to OperationsCommander initially, you are presented with a landing page. You can navigate back to that page anytime by clicking the OPSCOM logo. You can also find your Dashboards and system Setup information on this page.

OperationsCommander works hard to maintain an up to date product wiki! If you have any questions or if you feel something is missing, [post about it in the community.](#)

- [Using the OPSCOM-ARC System Dashboard & Widgets](#)
- [Edit the Admin Landing Page Messages](#)

Using the OPSCOM-ARC System Dashboard & Widgets

The OperationsCommander (OPSCOM) dashboard is a fully customizable, widget-based analytics dashboard built into the admin portal. Each user can create multiple personal dashboards, arrange widgets freely on a drag-and-drop grid, and configure each widget individually to show exactly the data they need. Dashboards and widgets automatically refresh on a configurable schedule and are fully responsive down to mobile widths.

Dashboard Types

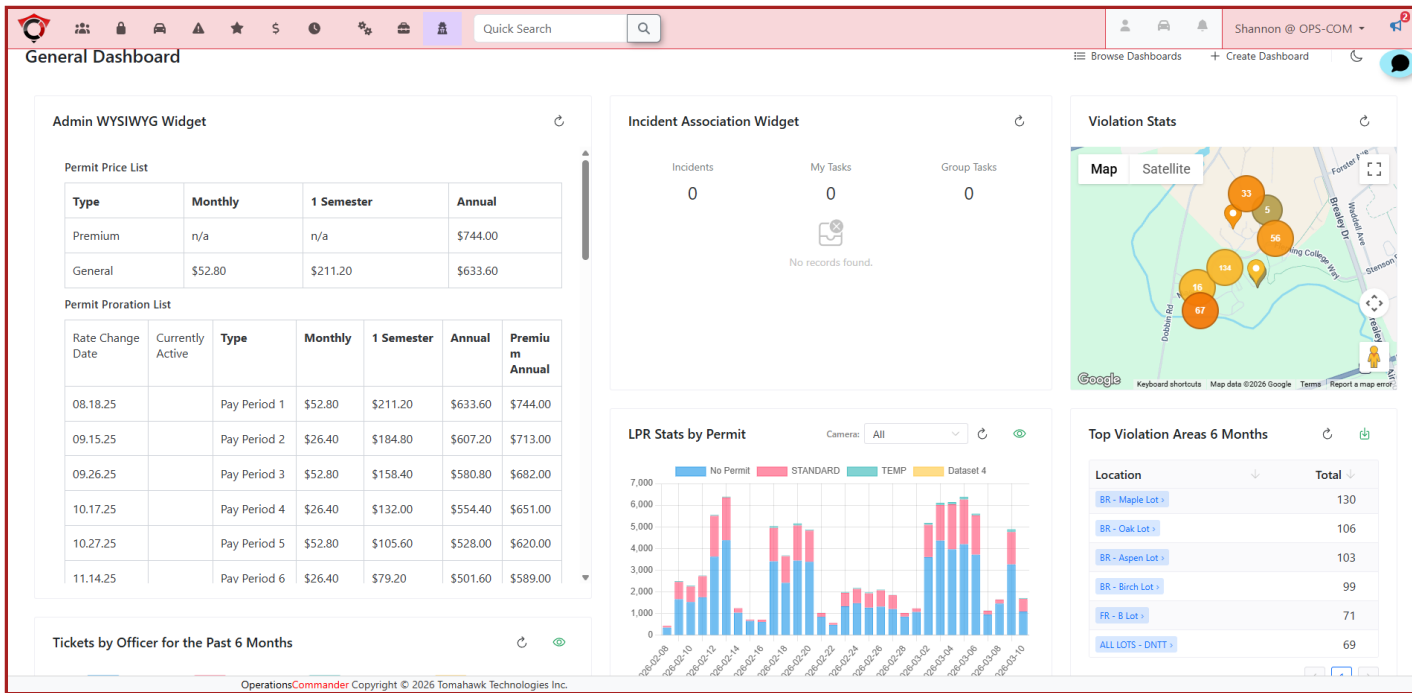
OPSCOM has two distinct dashboard types. The type is determined by where the dashboard is accessed from, and controls which widgets and data sources are available.

General Dashboard

The General Dashboard is the **main operations dashboard**, accessible to all admin users when they first log in and can be returned to at any time from anywhere in the system by clicking on the *OPSCOM Logo* in the top-left corner. It surfaces organization-wide data and is designed to give a broad operational overview.

Available widgets: Graph, Filterable Graph, List, Map, WYSIWYG, Incident Association

Default data sources: All sources tagged `general` (Violation Stats, LPR Stats, Permit Stats)



Admin Dashboard

The Admin Dashboard is a **per-admin profile dashboard**, shown when viewing a specific admin's profile page. It is scoped to that admin — widgets that show violation or activity data are automatically filtered to the admin being viewed, not the person viewing the page.

Available widgets: Graph, Filterable Graph, List, Map, WYSIWYG, Admin Info, Incident Association

Default data sources: Violation Stats + all sources tagged `admin` (LPR Stats)

Managing Dashboards

Creating a Dashboard

1. On the **Dashboard** homepage in the admin portal, click **+ Create Dashboard**.
2. Enter a **Name** and choose a **Visibility**:
 - **Private** – only you can see it.
 - **Visible** – any admin with the `dashboard_browse` permission can browse it.
3. Click **Create**. The new dashboard opens immediately.

Switching Between Dashboards

Open the dashboard picker drawer named **Browse Dashboard** at any time. All dashboards you own, collaborate on, or that are "Visible" are listed. Click any entry to switch. Your personal default and the organization default are highlighted.

Editing a Dashboard

Toggle **Edit Mode** via the toolbar toggle switch. In edit mode you can:

- **Drag** widgets to reposition them on the grid.
- **Resize** widgets by dragging their bottom-right corner.
- **Add** widgets using the + **Add Widget** button (opens the widget gallery).
- **Delete or duplicate** individual widgets via the icons that appear on each widget header.
- **Rename or change visibility** of the dashboard via the **Edit** button in the toolbar.

When finished, click **Save Layout** to persist the grid positions.

If you navigate away without saving you will be prompted to confirm discarding unsaved changes.

Sharing & Collaboration

Feature	How to use
Collaborators	Add other admins as collaborators (Edit button → Collaborators tab). Collaborators can view and edit the dashboard.
Visibility	Set to <i>Visible</i> to allow anyone with <code>dashboard_browse</code> permission to view it (read-only).

Organization Default	Admins with <code>dashboard_set_org_default</code> permission can mark one dashboard as the org default — it appears as the landing dashboard for all admins.
Personal Default	Each user can star <input type="checkbox"/> a dashboard to mark it as their personal landing page.

Deleting a Dashboard

Open the dashboard picker, hover over the dashboard entry, and click the trash icon.

Please Note: Deletion is permanent.

Widgets

Widgets are the individual panels that populate a dashboard. Each widget has:

- A **widget type** — determines how data is rendered.
- A **data source** — determines where the data comes from and what filters are available.
- A **configuration** — display settings, filters, and widget-type-specific options.

Adding a Widget

1. Turn on **Edit Mode**.
2. Click + **Add Widget**.

3. Browse or search the widget gallery. Each card shows the widget type and compatible data sources.
 4. Click a card to add it. The widget appears on the grid.
 5. Click the ⚙️ **Settings** icon on the new widget to choose a data source and configure it.
-

Widget Types

Graph Widget

Displays data as an interactive chart. Supports five chart styles selectable from the settings modal:

Chart Type	Description
------------	-------------

**Ba
r**

Ver
tica
l
bar
s —
go
od
for
co
mp
ari
ng
cou
nts
ove
r
tim
e.

Stacked Bar	Multiple datasets stacked — ideal for group-by breakdowns.
Line	Trend line — best for continuous time-series.

Pie	Proportional slices — best for a small number of categories.
Doughnut	Like Pie but with a hollow centre.

Extra options:

- **Colorful Bars** — when there is only one dataset, each bar gets a distinct colour from the palette.
 - **View Data** (☐☐ button) — opens a tabular view of the underlying data with a **CSV download** option.
-

Filterable Graph Widget

Identical to the Graph widget with one extra feature: an **inline filter dropdown** displayed directly on the widget header. This lets users slice the chart in real-time without opening settings.

The available filter dimension (e.g. `Camera`, `Permit Type`, `Device Type`) is configured in the widget settings under **Filter Dimension**. Once set, the dropdown appears on the widget and fetches the available options automatically from the same data source, respecting all other active filter settings.

List Widget

Displays data as a sortable, paginated **data table**. The columns shown are controlled by the **Columns** setting in the data source configuration. Useful for raw record-level views (individual violations, permits, LPR reads).

Map Widget (Geo Location)

Displays geocoded records as **pins on an interactive map** (Leaflet).

Features:

Fe at ur e	De scr ipt ion
-------------------------------	-----------------------------------

Cluster Pins

Groups nearby pins into numbered clusters that expand on zoom. Configurable minimum cluster size and

**Col
or
by
Age**

Pins are coloured from green (recent) to red (older) based on record age.

Draw Path

Connect sequential records with a polyline — useful for patrol route visualization.

Bo un din g Bo x Fil ter	Res tric t visi ble rec ord s to a lat/ lon g bo un din g box con fig ure d in set tin gs.
---	--

WYSIWYG Widget

A free-form **rich-text content panel**. Supports formatted text, headings, bullet lists, bold/italic, hyperlinks, and more. Useful for notes, announcements, or instructions embedded directly in the dashboard.

Content is edited in a dedicated editor page (accessible via the widget's settings).

Admin Info Widget

A read-only **profile summary card** for the admin account currently being viewed. Displays the admin's name, role, contact details, and related account information. This widget is context-aware — it reflects the profile of whichever admin the viewer is currently inspecting, not their own account. No data source configuration required.

Incident Association Widget

Displays incident association data relevant to the dashboard context. Configuration details depend on the deployment.

Data Sources

Data sources connect widgets to the OPSCOM backend APIs. Each data source exposes a set of **Display Settings** (how data is grouped and presented) and **Filter Settings** (which records to include). Settings are split across two tabs in the settings modal.

Violation Stats

Identifier: `admin-violations`

Compatible widgets: Graph, Filterable Graph, List, Map

Display Settings

S e t t i n g	O p t i o n s	D e s c r i p t i o n
--	--	--

**T
i
m
e
P
e
r
i
o
d**

A
L
i
m
i
t
e
r
s
e
r
e
c
o
r
d
s
7
D
a
y
s
/
L
a
s
t
3
0
D
a
y
s
/
L
a
s
t
3
M
o
n
t
h
s
/
L

L
i
m
i
t
s
r
e
c
o
r
d
s
t
o
d
a
y
r
e
l
a
t
i
v
e
d
a
t
e
w
i
n
d
o
w
.

G	N	B
r	o	u
o	n	c
u	e	k
p	/	e
b	D	t
y	a	s
T	y	r
i	/	e
m	W	c
e	e	o
	e	r
	k	d
	/	s
	M	b
	o	y
	n	t
	t	m
	h	e
	/	p
	Y	e
	e	r
	a	o
	r	d
		o
		n
		t
		h
		e
		X
		-
		a
		xi
		s.

G	N	S
r	o	p
o	n	l
u	e	i
p	/	s
b	Pl	d
y	a	a
E	t	t
n	e	a
t	/	i
t	L	n
y	o	t
	c	o
	a	o
	t	n
	i	e
	o	d
	n	a
	/	t
	W	a
	r	s
	i	e
	t	t
	e	p
	r	e
	/	r
	C	e
	a	n
	t	t
	e	i
	g	t
	o	y
	r	v
	y	a
		l
		u
		e
		.

E n t i t y L i m i t	A u t o / M a n u a l	A u t o = t o p N e n t i t i e s; M a n u a l = p i c k s p e c i f i c v a l u e s.
--	---	--

E n t i t y F i l t e r	M u l t i- s e l e c t (u p t o 1 0)	V i s i b l e w h e n G r o u p b y E n t i t y + M a n u a l l i m i t i s e t.
--	--	---

M	C	W
e	o	h
a	u	e
s	n	t
u	t	h
r	/	e
e	R	r
	e	Y
	v	-
	e	a
	n	x
	u	i
	e	s
		s
		h
		o
		w
		s
		n
		u
		m
		b
		e
		r
		o
		f
		vi
		ol
		a
		ti
		o
		n
		s
		o
		r
		d
		ol
		la
		r
		r
		o

**C
o
l
u
m
n
s**
(*Li
s
t
o
n
l
y*
)

Ti
c
k
e
t,
l
s
s
u
e
d
,
F
i
n
e
T
o
w
i
n
g
,
A
d
j
u
s
t
e
d
F
i
n
e
,
D
u
e
D
a
t

C
o
l
u
m
n
s
t
o
i
n
c
l
u
d
e
i
n
t
h
e
l
i
s
t
a
b
l
e
.

S	A	
o	s	
r	c	
t	e	
O	n	
r	d	
d	i	
e	n	
r	g	
	/	
	D	
	e	
	s	
	c	
	e	
	n	
	d	
	i	
	n	
	g	

Filter Settings

S	O	D
e	p	e
t	t	s
ti	o	c
n	n	ri
g	s	p
		ti
		o
		n

P a y m e n t S t a t u s	U n p a i d / O v e r d u e / P a i d / C o l l e c t i o n s (m u l t i - s e l e c t)	Fi lt e r b y p a y m e n t s t a t e .
--	---	---

**P
a
y
a
b
l
e
O
n
l
y**

T
o
g
g
l
e

S
h
o
w
o
n
l
y
v
i
o
l
a
t
i
o
n
s
t
h
a
t
a
r
e
r
e
c
u
r
r
e
n
t
l
y
p
a
y
a
b
l
e
.

**G
e
o
c
o
d
e
d
O
n
l
y**

T
o
g
g
l
e

S
h
o
w
o
n
l
y
v
i
o
l
a
t
i
o
n
s
w
i
t
h
G
P
S
c
o
o
r
d
i
n
a
t
e
s
(
u
s
e
f
u
l
f
o

**A
c
t
i
v
e
W
r
i
t
e
r
O
n
l
y**

T
o
g
g
l
(
d
e
f
a
u
l
t
:
o
n
)

E
x
c
l
u
d
e
r
e
c
o
r
d
s
f
r
o
m
d
e
a
c
t
i
v
a
t
e
d
a
d
m
i
n
a
c
c
o
u
n
t
s.

Permit Stats

Identifier: `permit-stats`

Compatible widgets: Graph, List

Display Settings

Setting	Options	Description
Time Period	All Time / Last 7 Days / Last 30 Days / Last 3 Months / Last 6 Months / Year to Date / Last Year	Date window filter on permit submit date.
Group by (<i>Graph only</i>)	None / Permit Type / Lot / User Type / Lot Group / Lot Zone	Splits into one dataset per group value.
Entity Limit (<i>Graph only</i>)	Auto / Manual	Auto = top N; Manual = pick specific values.
Entity Filter	Multi-select (up to 10)	Shown when Manual limit is active.
Measure	Count / Revenue	Count of permits vs. revenue generated.
Columns (<i>List only</i>)	User Type, Lot, Active Start, Active End, Lot Group, Price, Permit Type, Source, Lot Zone	
Sort Order	Ascending / Descending	

Filter Settings

S e t t i n g	O p t i o n s	D e s c r i p t i o n
A c t i v e O n l y	T o g o l e	S h o w o n l y c u r r e n t l y a c t i v e p e r m i t s.

P e r m it T y p e	S t a n d a r d , T e m p , C a l e s o u r c e s (m u l t i- s e l e c t)	Fi lt e r b y p e r m it t y p e /s o u r c e .
---	---	--

L	M	R
o	u	e
t	lt	s
s	i-	tr
	s	ic
	el	t
	e	t
	c	o
	t	s
	(p
	al	e
	l	ci
	lo	fi
	t	c
	s	p
)	a
		r
		ki
		n
		g
		lo
		t
		s.

L	M	R
o	u	e
t	lt	s
G	i-	tr
r	s	ic
o	el	t
u	e	t
p	c	o
s	t	n
		e
		o
		r
		m
		o
		r
		e
		lo
		t
		g
		r
		o
		u
		p
		s.

L	M	R
o	u	e
t	lt	s
Z	i-	tr
o	s	ic
n	el	t
e	e	t
s	c	o
	t	s
		p
		e
		ci
		fi
		c
		lo
		t
		z
		o
		n
		e
		s.

LPR Stats

Identifier: `lpr-stats`

Compatible widgets: Graph, Filterable Graph, List, Map

Display Settings

S e t t i n g	O p t i o n s	D e s c r i p t i o n
---------------------------------	---------------------------------	---

**T
i
m
e
P
e
r
i
o
d**
(*G
r
a
p
h
/L
i
s
t*)

A
ll
Ti
m
e
/
L
a
s
t
7
D
a
y
s
/
L
a
s
t
3
0
D
a
y
s
/
L
a
s
t
3
M
o
n
t
h
s
/
L

T	L	S
i	a	h
m	s	o
e	t	rt
P	4	-
e	H	t
ri	o	e
o	u	r
d	r	m
(s	w
<i>M</i>	/	i
<i>a</i>	L	n
<i>p</i>	a	d
<i>o</i>	s	o
<i>n</i>	t	w
<i>ly</i>	8	s
—	H	o
s	o	p
i	u	t
n	r	m
c	s	iz
e	/	e
=	L	d
g	a	f
e	s	o
o	t	r
)	D	r
	a	e
	y	al
	/	-
	L	ti
	a	m
	s	e
	t	m
	7	a
	D	p
	a	vi
	y	e
	s	w
		s

G	N	Ti
r	o	m
o	n	e
u	e	-
p	/	b
b	D	u
y	a	c
T	y	k
i	/	e
m	W	t
e	e	f
	k	o
	/	r
	M	X
	o	-
	n	a
	t	x
	h	i
	/	s.
	Y	
	e	
	a	
	r	

**G
r
o
u
p
b
y
E
n
t
i
t
y**

N
o
n
e
/
C
a
m
e
r
a
/
P
e
r
m
i
t
T
y
p
e
/
D
e
v
i
c
e
T
y
p
e
/
E
n
t
r
y
-
E
x
i
t

E n t i t y L i m i t	A u t o / M a n u a l	
E n t i t y F i l t e r	M u l t i - s e l e c t (u p t o 1 0)	

F	C	S
i	a	e
t	m	t
e	e	s
r	r	t
D	a	h
i	/	e
m	P	i
e	e	n
n	r	l
s	m	n
i	i	e
o	T	fil
n	y	t
(p	e
<i>Fi</i>	e	r
<i>lt</i>	/	d
<i>e</i>	D	r
<i>r</i>	e	o
<i>a</i>	vi	p
<i>b</i>	c	d
<i>le</i>	e	o
<i>G</i>	T	w
<i>r</i>	y	n
<i>a</i>	p	o
<i>p</i>	e	n
<i>h</i>	/	t
<i>o</i>	E	h
<i>n</i>	n	e
<i>ly</i>	tr	w
)	y	i
	-	d
	E	g
	xi	e
	t	t
	T	f
	y	a
	p	c
	e	e

**C
o
l
u
m
n
s**
(*Li
s
t
o
n
l
y*
)

Pl
a
t
e
,
C
a
m
e
r
a
,
P
e
r
m
it
T
y
p
e
,
R
e
c
o
r
d
e
d
,
D
e
v
i
c
e
T
y
p
e

V
i
s
i
b
l
e
w
h
e
n
G
r
o
u
p
b
y
E
n
t
i
t
y
i
s
n
o
t
s
e
t.
t.

S	A	
o	s	
r	c	
t	e	
O	n	
r	d	
d	i	
e	n	
r	g	
	/	
	D	
	e	
	s	
	c	
	e	
	n	
	d	
	i	
	n	
	g	

Filter Settings

S	O	D
e	p	e
t	t	s
ti	o	c
n	n	ri
g	s	p
		ti
		o
		n

P e r m i t T y p e	A / T e m p / S t a n d a r d / N o n e (m u l t i- v a l u e)	Fi l t e r r e a d s b y p e r m i t v a l i d a t i o n r e s u l t .
--	---	--

C a m e r a T y p e	E n t r y / E x i t / M o n i t o r / P a t r o l (m u l t i- s e l e c t)	Fi lt e r b y c a m e r a c l a s s i f i c a t i o n .
--	---	---

Map-only Settings (Geo Display)

Setting	Description
Cluster Pins	Enable/disable pin clustering.
Cluster Minimum Size	Minimum number of pins before they cluster.

Cluster Max Zoom	Zoom level at which clusters dissolve into individual pins.
Color by Age	Colour-code pins by record age.

Draw Path	Connect pins in chronological order with a line.
Bounding Box	Latitude/Longitude min/max to limit the visible area.

Widget Settings Modal

Every widget has a ⚙️ **Settings** button (visible in both view and edit modes).

The modal contains:

1. **Widget Name** — optional custom title shown in the widget header.
Defaults to the data source name if left blank.
2. **Data Source** — dropdown to choose which data source powers this widget. Only sources compatible with the current widget type are shown.
3. **Widget-type settings** — e.g. Chart Type and Colorful Bars (Graph widgets).
4. **Display Settings tab** — grouping, columns, sort, measure, entity filter settings.
5. **Filters tab** — record-level filters (time period, payment status, lot restrictions, etc.).

Click **Save** to apply. The widget immediately re-fetches data with the new configuration.

Permissions Reference

Permission	Effect
dashboard_browse	Can view dashboards marked <i>Visible</i> .
dashboard_edit_any	Can edit any dashboard regardless of ownership.
dashboard_set_org_default	Can promote a dashboard to org-wide default.

<i>(Owner)</i>	Full edit rights on own dashboards.
<i>(Collaborator)</i>	View and edit rights on dashboards shared with them.

Tips & Best Practices

- **Use the Filterable Graph** for LPR Camera data — set *Filter Dimension* to to get a per-camera dropdown directly on the widget without opening settings.
- **Star your most-used dashboard** so it loads automatically when you navigate to the dashboard page.
- **Group by Entity + Stacked Bar** is the most readable combination for comparing multiple cameras, lots, or writers side by side.
- **Year to Date + Group by Month** gives a clean year-progress chart that resets automatically each January.
- **Geo widgets work best** with *Last 4-8 Hours* time range and *Cluster Pins* enabled for busy patrol routes.
- **The List widget** is ideal alongside a Graph widget on the same dashboard — use the same data source and filter settings to give both a chart view and a raw-record drill-down on the same screen.

Edit the Admin Landing Page Messages

The Admin Dashboard is the initial landing page presented to administrators upon logging into OPSCOM. This article guides administrators on how to modify and customize this landing page message, allowing organizations to display important and up-to-date information directly to their system administrators and staff.

Setup & Configuration

Customizing this message requires access to Contents & Designs on the System Configuration menu. You must have the **Managing System Messages** permission on your profile to access this.

1. Hover over **System Configuration, Admin Management**, and click **Manage Roles**.
2. Click Permissions on the role you want to grant this to.
3. On the **System Content** tab, enable the **Manage System Messages** checkbox.
4. Click **Save Permissions**.

Using this Feature

The **Manage System Messaging** tool allows you to access and modify the content of the Admin Dashboard.

1. Hover over **System Configuration, Content & Designs**, and click **Pages and Content Blocks**.

2. Click the **Messages** tab.
 3. Click Edit next to the **Admin Dashboard** item.
 4. The WYSIWYG editor will show by default. To edit in HTML, select **Source Code** from the **Tools** menu.
 5. After making your edits, click the **Save Messaging** button. A pop-up confirmation will notify you that your changes have been saved.
-

Best Practices & Considerations

- **Relevant Information:** Customize the OPSCOM **Admin Dashboard** to display important and up-to-date information relevant to administrators and staff, such as recent system updates, upcoming deadlines, schedules or internal announcements.
- **Concise Messaging:** Keep messages clear and concise. The dashboard is a quick reference, so avoid overly long or complex text.
- **Visual Elements:** Leverage the WYSIWYG editor to incorporate basic formatting, images, or links to make your messages more engaging and informative.
- **Regular Updates:** Periodically review and update your Admin Dashboard message to ensure the information remains current and valuable to your staff.